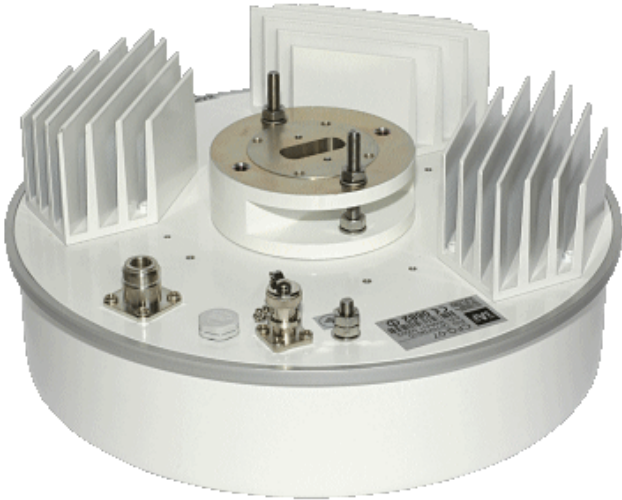


## CFQ Radio



CFQ digital radios provide high capacity (up to 155 Mbps) transmission, flexibility, features and convenience for wireless communications networks.

CFQ series digital point-to-point radios represent a new microwave radio product line that is designed to address universal applications for both PDH and SDH platforms. This advanced technology platform is designed to provide flexibility to customers currently and in the future.

The radio family is spectrum and data rate scalable, enabling service providers or organizations to employ appropriate system gain with spectral efficiency and channel availability for optimal network connectivity.

The radio enables network operators (mobile and private), government and access service providers to offer a portfolio of secure, scalable wireless applications for data, video and voice.

CFQ Outdoor Unit (ODU) is designed to be capacity independent. The ODU can support frequency bands from 6 to 38 GHz.

CFQ MICROWAVE RADIO SYSTEM SPECIFICATION		CFQ-6	CFQ-7	CFQ-8	CFQ-11	CFQ-13	CFQ-15	CFQ-18	CFQ-23	CFQ-38
Product number		<b>Q06RFMxx</b>	<b>Q07RFMxx</b>	<b>Q08RFMxx</b>	<b>P11RFMxx</b>	<b>Q13RFMxx</b>	<b>Q15RFMxx</b>	<b>Q18RFMxx</b>	<b>Q23RFMxx</b>	<b>Q38RFMxx</b>
Modulation		QPSK; 16QAM; 32QAM; 128QAM								
Capacity		Up to 155 Mbps (STM-1)								
Channel bandwidth (MHz)		7, 14, 28 MHz	7, 14, 28 MHz	7, 14, 28 MHz	7, 14, 28 MHz	7, 14, 28 MHz	7, 14, 28 MHz	7, 13.75, 27.5 MHz	7, 14, 28 MHz	28MHz
Intermediate frequency (MHz)		Transmit/Receive: 350/140								
Frequency stability (ppm)		+/-7	+/-10	+/-7	+/-7	+/-10	+/-10	+/-10	+/-10	+/-10
Background BER		<10 <sup>-12</sup>								
Performance		Performance parameters correspond to recommendations ETSI EN 301 129 V1.1.2 (1999-05), EN 301 126 V1.1.2, EN 301 390 V1.2.1, EN 302 217-2-1 V1.1.3, EN 302 217-2-2 V1.1.3								
Guaranteed max Power (QPSK/28MHz)		27 (SP) 32 (HP)	30	27 (SP) 32 (HP)	27 (SP) 32 (HP)	28	27	22	22	20
Output power increments (dB)		0.5	0.1	0.5	0.5	0.1	0.1	0.1	0.1	0.1
Output power dynamic range (dBm) (QPSK/28MHz)		-5 to +27 (SP) -5 to +32 (HP)	+9 to +30	-5 to +27 (SP) -5 to +32 (HP)	0 to +27 (SP) 5 to +32 (HP)	5 to +28	+5 to +27	+3 to +22	0 to +22	-1 to +20
Maximum Transmitter power, dBm (Standard power / (High power) (28 MHz channel bandwidth))	QPSK	27/32	30	27/32	27/32	28	27	22	22	20
	16QAM	24/29	27	24/29	24/29	25	24	19.5	19	17
	32QAM	24/29	24	24/29	24/29	23	21	18	17	15
	128QAM	22/27	24	22/27	21/26	22	21	18	16	14

Received thresholds (guaranteed dBm) BER 10 <sup>-6</sup> (28 MHz channel bandwidth)	QPSK	-87	-87.5	-86	-86	-87.5	-86.5	-86	-85	-83.5
	16QAM	-82	-79	-81	-81	-79	-78	-77.5	-76.5	-75
	32QAM	-78	-76	-77	-77	-76	-75	-74.5	-73.5	-72
	128QAM	-69	-74	-68	-68	-70	-69	-68.5	-67.5	-66
Flange type	UDR 70	UBR 84	UBR 84	UBR 100	UBR 140	UBR 140	UBR 220	UBR 220	UBR 320	
Max. Input power at antenna port	10 dBm									
Polarization	vertical or horizontal, field selectable									
Mounting options to antenna	direct or via flexible waveguide									

[Home](#) > [Products](#) > [CFQ](#) > [Radio Units](#) > CFQ Microwave Radio Unit