



SAF Info Gather

Statistics Gathering Tool

Description

Table of Contents

1	Overview	3
2	Installation	3
3	Using IGather.....	4
4	SAF Tehnika Contacts.....	5

Revision History

<i>Revision</i>	<i>Date</i>	<i>Comments</i>
1.0	January 16, 2007	Initial release. Software version 1.00

1 Overview

“SAF Info Gather” is SAF Tehnika proprietary statistics gathering tool intended for gathering statistical information of radiolink performance thus helping to monitor equipment, detect and correct faults. It collects the following data:

- IDU and ODU parameter values
- Configuration related information
- Serial numbers
- Log file entries

The provided information is useful for the overall understanding of situation concerning the radiolink equipment, and it also contributes to solving problems easier and faster.

“SAF Info Gather” is distributed as “setup.zip” archive.

2 Installation

To install the “SAF Info Gather” tool it is necessary to extract the provided archive and then run the Setup Launcher. The following window will appear:

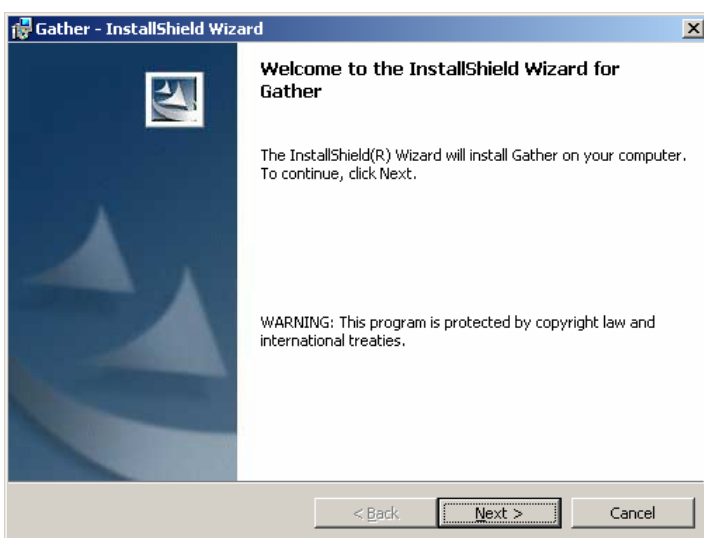


Fig. 1

Press “Next” to continue.

After the installation is completed the window shown in Fig. 2 will be displayed. By default “SAF Info Gather” tool is installed to “Program Files\SAF Tehnika\InfoGather”.

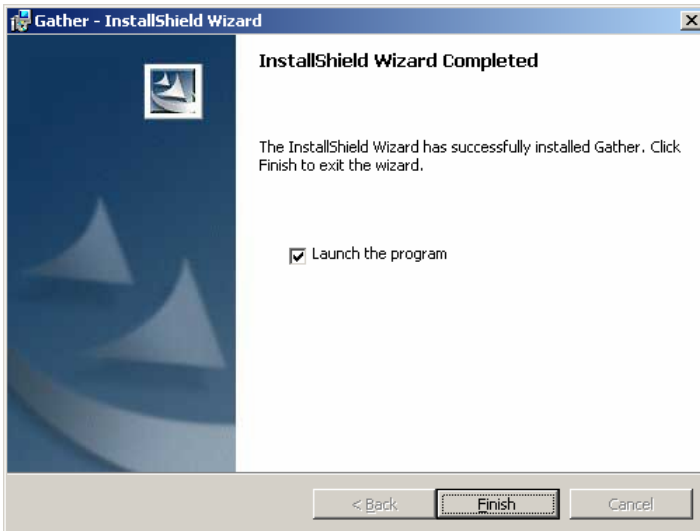


Fig. 2

Press "Finish" to exit the installation wizard. If "Launch the program" checkbox was not unchecked, the "SAF Info Gather" tool will be launched after quitting the installation wizard. Then the "SAF Info Gather" main window will appear (Fig. 3).

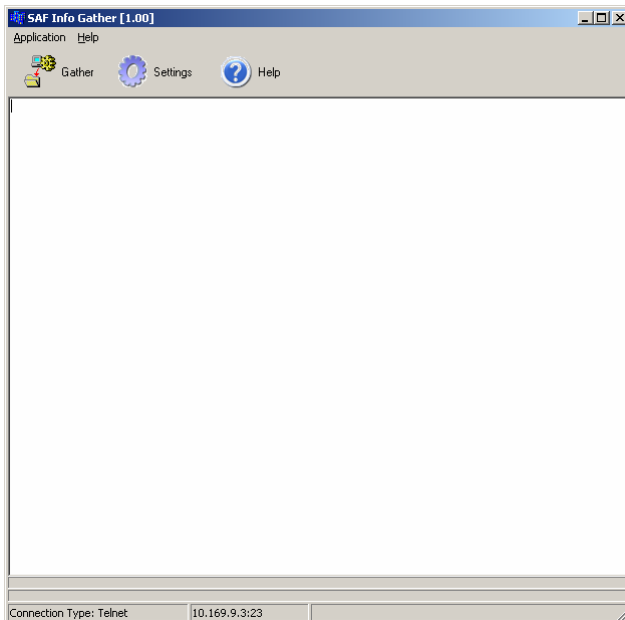


Fig. 3

3 Using Info Gather

In order to gather the statistics it is necessary to connect the PC to the IDU using Ethernet or serial cable. Then press "Settings" and specify the connection parameters, time during which data should be collected, and path for saving information (Fig. 4).

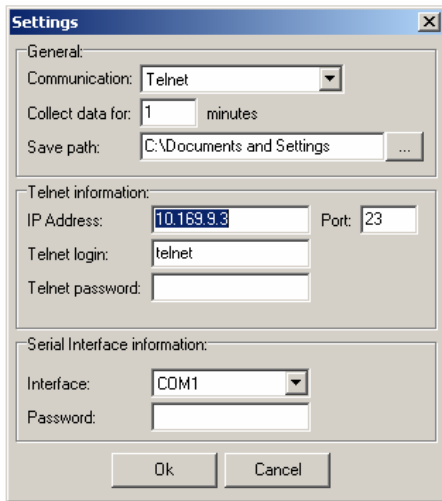


Fig. 4

It is possible to choose between Telnet and serial interface. Then enter the information in corresponding fields and press "OK".

- For Telnet: specify the IDU IP-address, port number (23 by default), Telnet login and password.
- For serial interface: choose the port from the drop-down list (e.g. COM1) and enter the password.

Note: it is recommended to set the longer collection period (at least several hours) to make the gathered data more informative and demonstrative.

Then press "Gather" – this will create a file with extension .arj in the directory specified in the "Save path" field.

4 SAF Tehnika Contacts

Most up to date contacts of SAF Tehnika A/S could be found at Web site www.saftehnika.com.

SAF Tehnika A/S technical support could be reached at:

Email: techsupport@saftehnika.com

Telephone: +371 7046840

Fax: +371 7046809