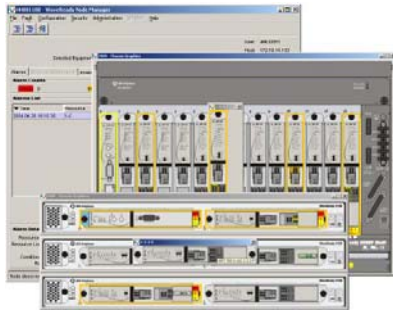


TMN and FCS Compliant Management

WaveReady™ Node Manager 4.1



Key Features

- In-band supervisory channel for remote module management
- Local and remote management
- Management of SAN, data, video optical transport and wavelength services on a single platform
- Web-based deployment
- Intuitive graphical user interface

Applications

- WaveReady node management
- Integration with existing network management and OSSs such as HP Open View

Compliance

- TMN compliant with FCS support

The WaveReady Management Solution

The JDSU WaveReady Node Manager is a simple solution for managing WaveReady 3000 modules and shelves. It simplifies the management of WaveReady 3000 equipment through direct access to individual modules. It is easy and fast to install, commission, or upgrade from a craft interface, Ethernet LAN, or directly from the Web.

Release 4.1 includes support for the latest hardware in the WaveReady 3000 series: the WaveReady 3500-F and 3100 shelves, COMM-200 communications module, and WRT 700 and 800 series modules.

Seamless Integration

Node Manager's simplicity and compliance with industry standards make it easy for operators of any size to focus on their core business. It features easy integration with complex operation support systems (OSSs) and management systems such as HP Open View. It can also be used standalone for direct management of WaveReady nodes. Remote management of certain modules over an in-band supervisory channel extends the reach of management capability.

Node Manager is Telecommunications Management Network (TMN) compliant with full support for Fault, Configuration and Security (FCS) management.

About WaveReady 3000

WaveReady 3000 modules and Node Manager are designed with the requirements of both small and large service providers and enterprises in mind. WaveReady provides simple, cost-effective optical transport with a modular approach that minimizes the total cost of ownership as networks grow and services evolve.

WaveReady's independence from service architecture, data-rate, or protocol, and its principles of operational fit, carrier class reliability, and least-cost at any scale, enables customers to address service evolutions and revolutions knowing they are resting on a solid JDSU foundation.

WaveReady Node Manager Features

Equipment Management

- Auto-discovery of a WaveReady 3000 series modules and shelves
- Display of equipment inventory and status
- Maintenance operations: port loopback, protection switch
- Software downloads and upgrades
- Event logs
- Remote management of certain WaveReady modules over an in-band supervisory channel
- Supports all WaveReady 3000 series equipment

GUI Representation of WaveReady Components

- Intuitive point-and-click interface
- Drill-down to node, element, card, and port
- Simultaneous GUI sessions

Nodal Alarm Summary

- First alert via alarm summary banners
- Active alarm list and details on the node
- Alarm filters

Security Management

- User management and authentication

Software Platform

- Java application on Windows 2000

WaveReady 3000 Series OAM Features

- Northbound interfaces: OSMINE - Telcordia® TL1 and SNMPv1, SNMPv2 and SNMPv3
- User management and authentication
- Autonomous reporting of alarm raise and clear events
- Configuration of equipment
- Module software download
- Retrieval and clearing of logs
- Alarm monitoring
- Equipment inventory

Node Manager and HP OpenView Features

- Auto-discovery of WaveReady 3000 modules and shelves into an HP OpenView map
- Support for all JDSU Management Interface Bases (MIBs) through HP OpenView
- WaveReady node icon for HP OpenView map
- Graphical, visual indication of alarms and traps (icon color change)
- Launching of WaveReady Node Manager from the WaveReady Node Icon

3

Ordering Information

For more information on this or other products and their availability, please contact your local JDSU account manager or JDSU directly at 1-800-498-JDSU (5378) in North America and +800-5378-JDSU worldwide or via e-mail at customer.service@jdsu.com.

Sample: WRM-NODEMNGSW-410

Product Code	Description
WRM-NODEMNGSW-410	WaveReady Node Manager 4.1

Telcordia is a registered trademark of Telcordia Technologies Incorporated.

All statements, technical information and recommendations related to the products herein are based upon information believed to be reliable or accurate. However, the accuracy or completeness thereof is not guaranteed, and no responsibility is assumed for any inaccuracies. The user assumes all risks and liability whatsoever in connection with the use of a product or its application. JDSU reserves the right to change at any time without notice the design, specifications, function, fit or form of its products described herein, including withdrawal at any time of a product offered for sale herein. JDSU makes no representations that the products herein are free from any intellectual property claims of others. Please contact JDSU for more information. WaveReady, JDSU and the JDSU logo are trademarks of JDS Uniphase Corporation. Other trademarks are the property of their respective holders. ©2005 JDS Uniphase Corporation. All rights reserved. 10143111 Rev. 002 10/05 WRNODEMGR41.DS.CMS.AE